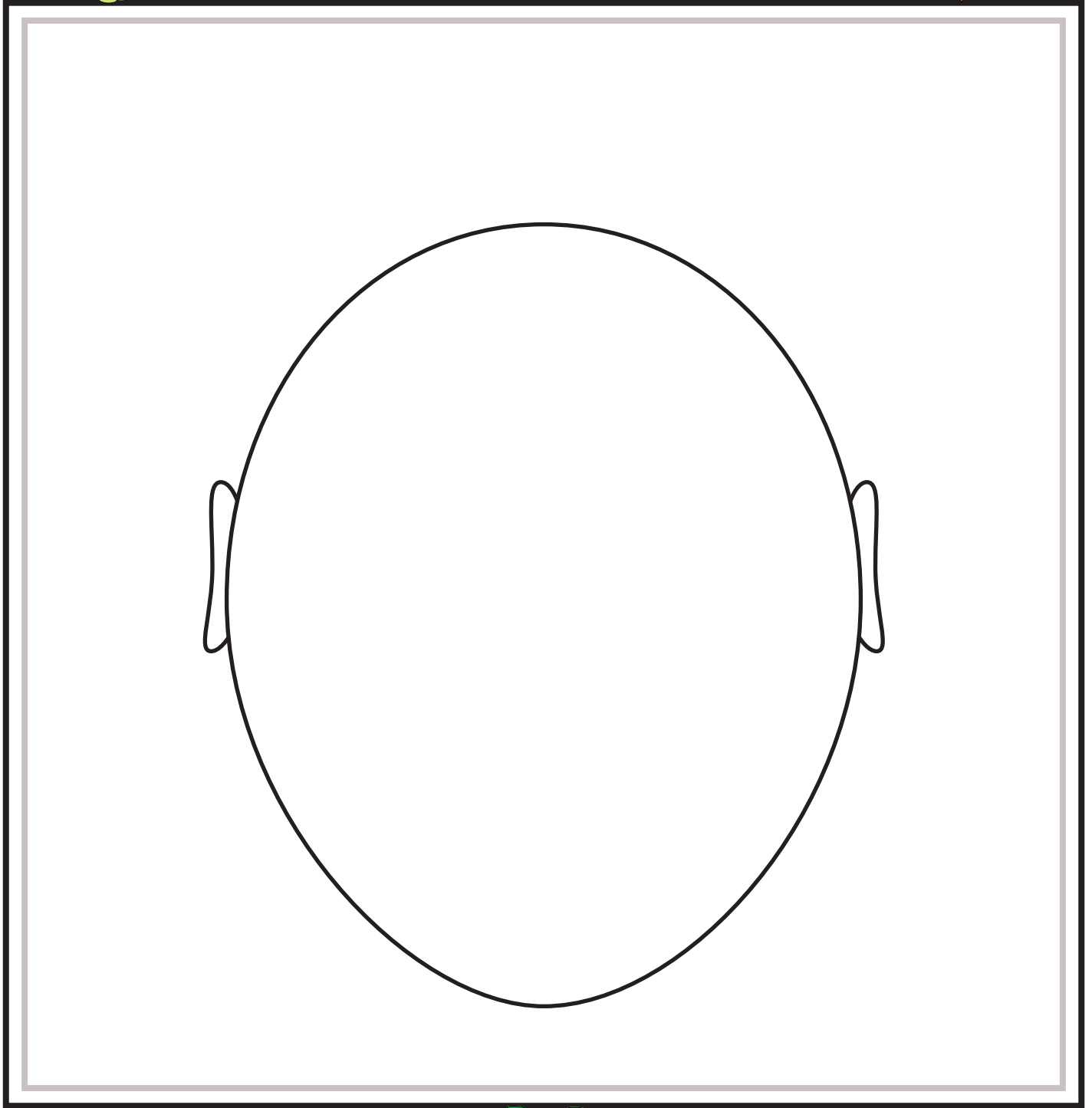
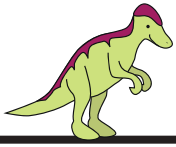
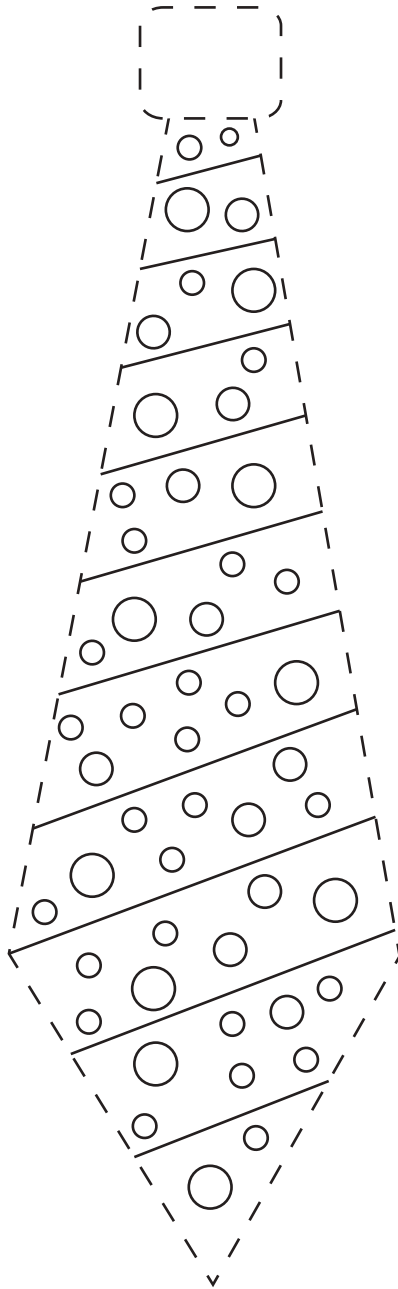


This is my dad



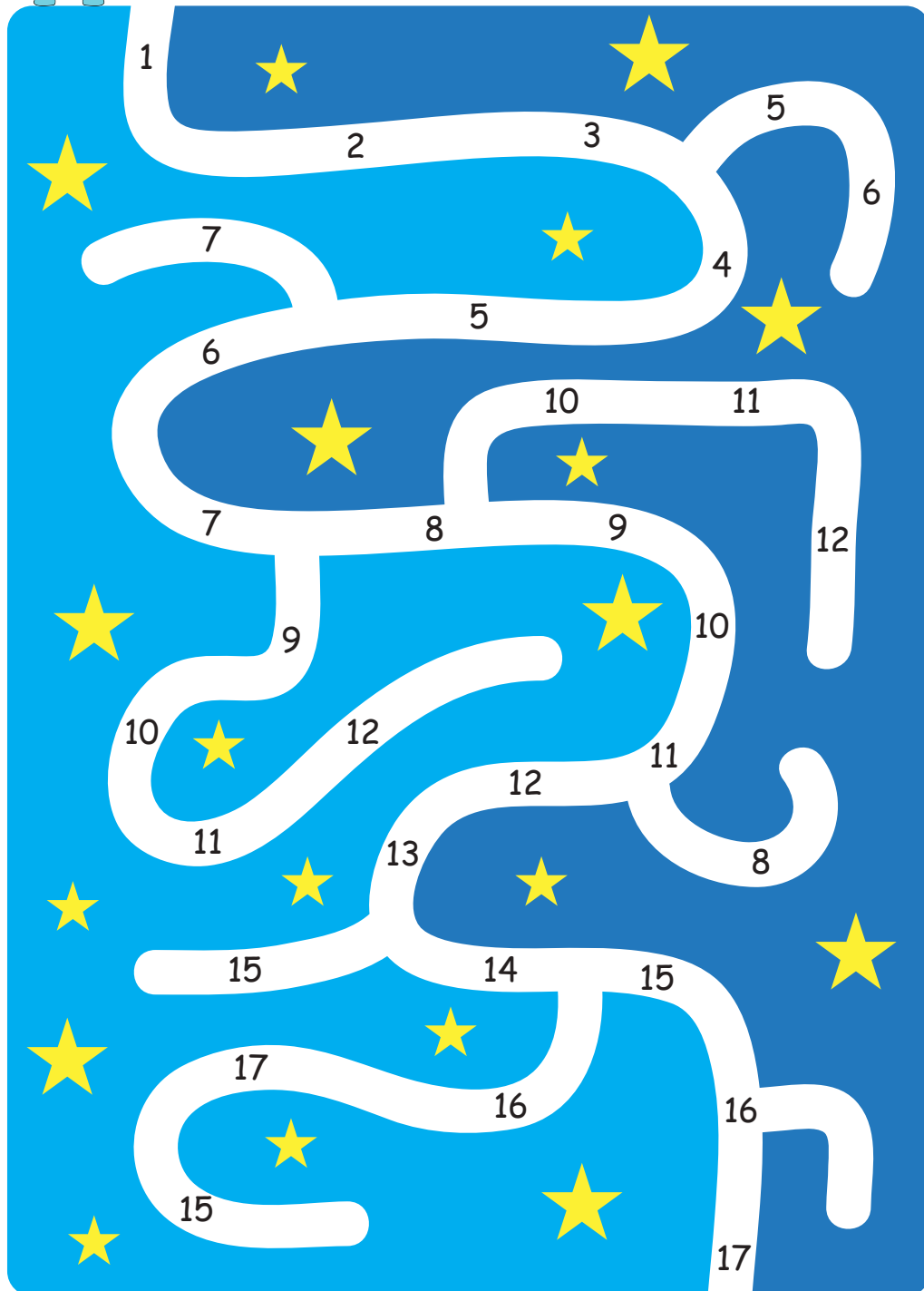
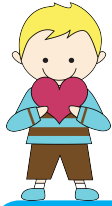
father's day



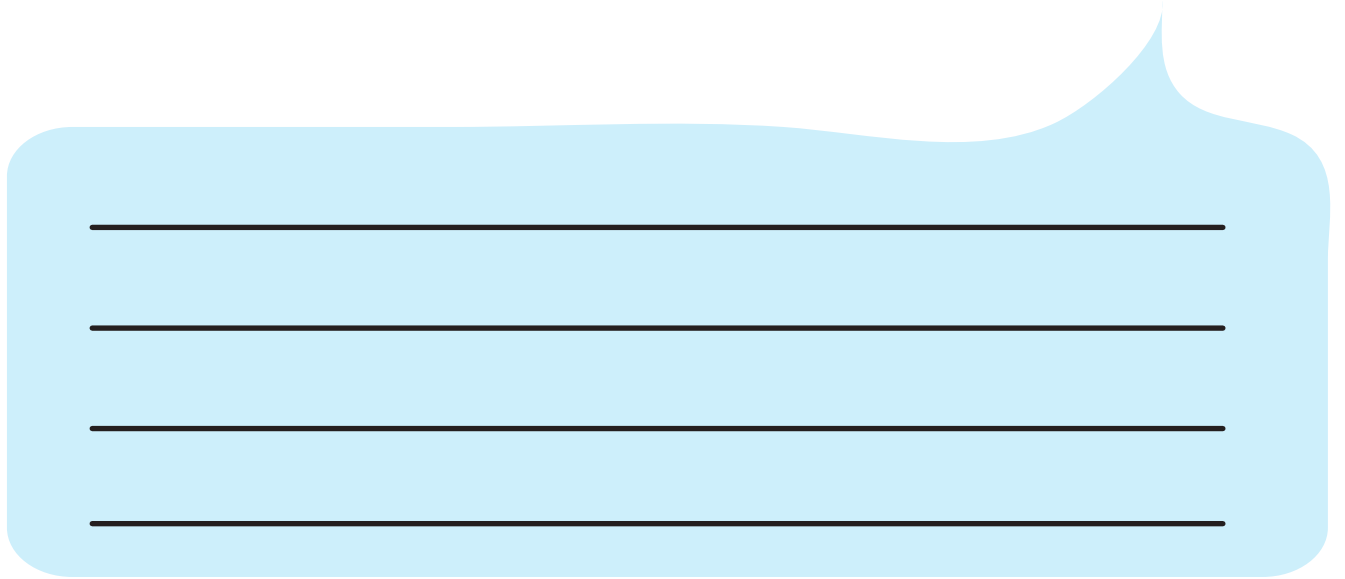
Trace and color.



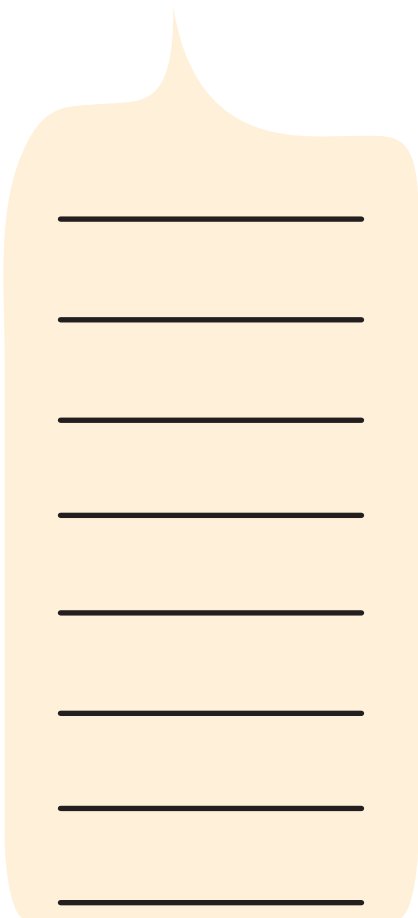
# Follow the numbers and solve the maze



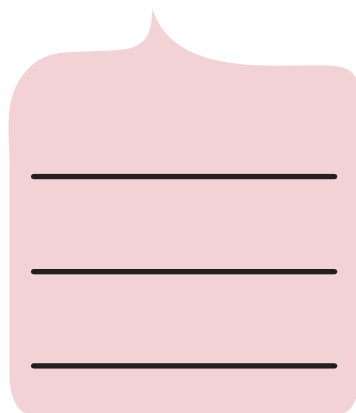
I love my dad because he ...



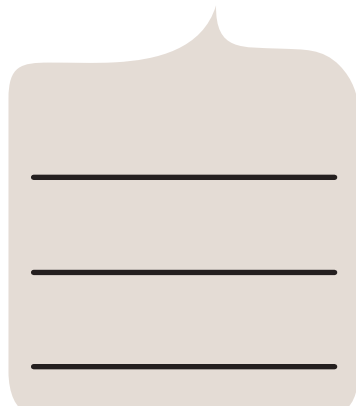
A large, light blue, rounded rectangular area with a pointed top right corner. It contains four horizontal black lines for writing.



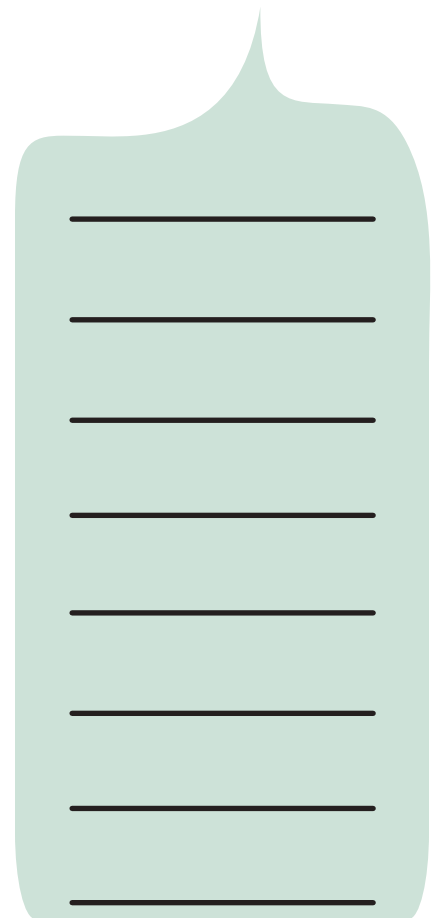
An orange, rounded rectangular area with a pointed top. It contains ten horizontal black lines for writing.



A pink, rounded rectangular area with a pointed top. It contains three horizontal black lines for writing.



A grey, rounded rectangular area with a pointed top. It contains three horizontal black lines for writing.



A green, rounded rectangular area with a pointed top. It contains ten horizontal black lines for writing.



Follow the number 1 to solve the maze



|   |   |   |   |   |   |   |   |   |   |
|---|---|---|---|---|---|---|---|---|---|
| 5 | 1 | 8 | 5 | 9 | 6 | 3 | 2 | 7 | 9 |
| 4 | 1 | 1 | 8 | 6 | 5 | 7 | 2 | 3 | 8 |
| 8 | 3 | 1 | 5 | 2 | 8 | 6 | 9 | 7 | 5 |
| 2 | 7 | 1 | 1 | 5 | 9 | 6 | 8 | 4 | 7 |
| 4 | 8 | 5 | 1 | 2 | 8 | 9 | 6 | 3 | 7 |
| 9 | 8 | 2 | 1 | 1 | 3 | 5 | 4 | 8 | 2 |
| 8 | 4 | 6 | 2 | 1 | 2 | 8 | 9 | 7 | 2 |
| 2 | 3 | 4 | 1 | 1 | 8 | 5 | 6 | 9 | 2 |
| 9 | 4 | 1 | 1 | 2 | 3 | 8 | 9 | 6 | 4 |
| 8 | 9 | 1 | 8 | 5 | 6 | 7 | 6 | 3 | 9 |

