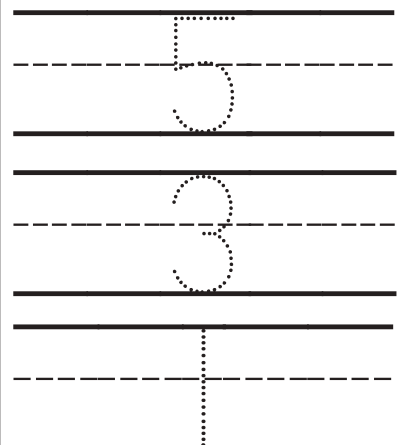
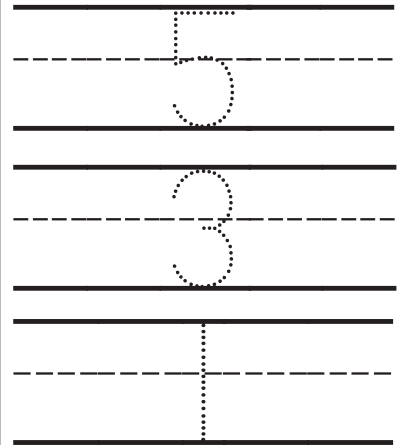
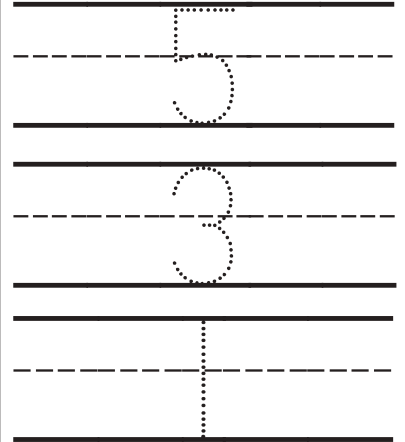
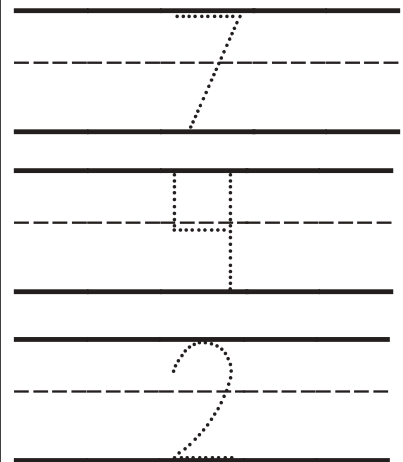
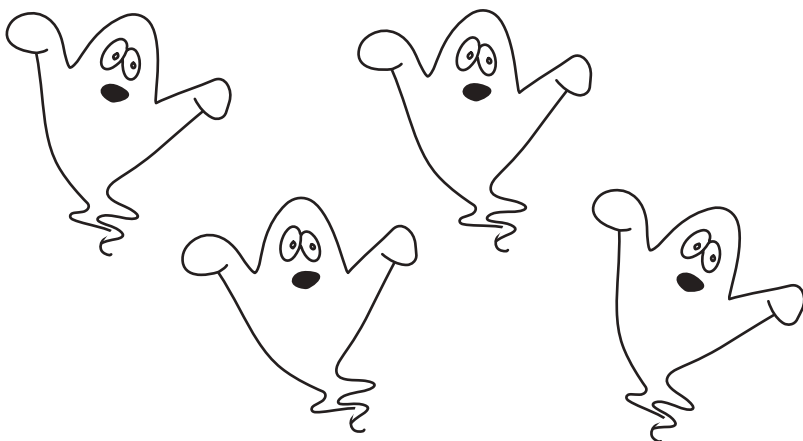
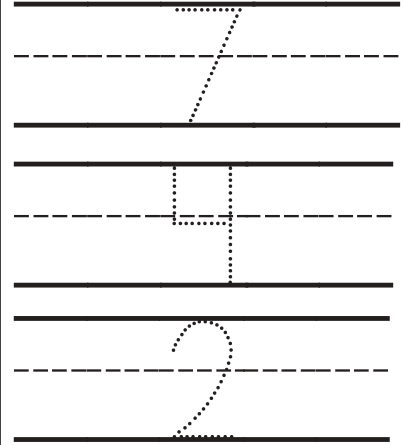
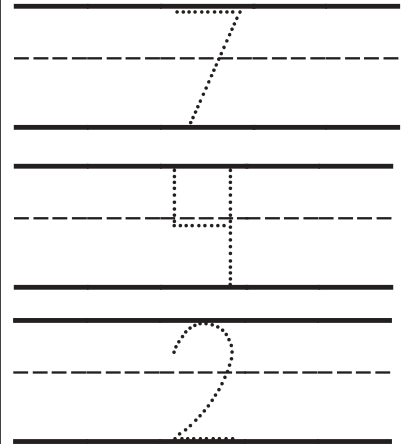


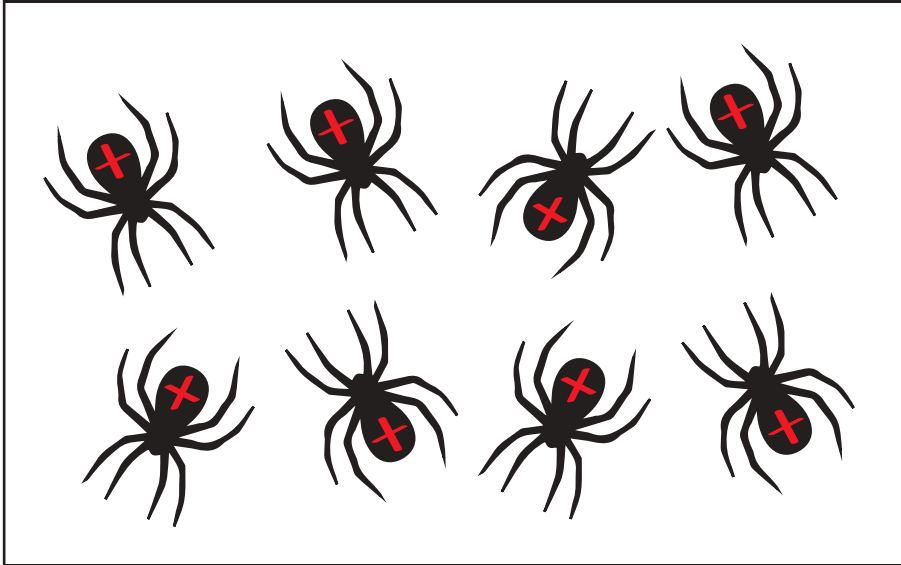
Trace the correct answer.



Trace the correct answer.



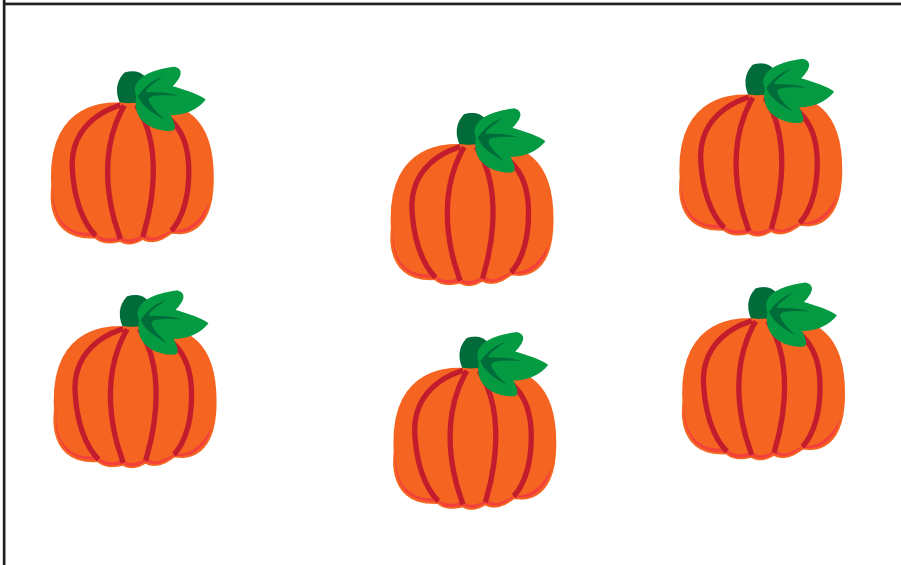
Trace the correct answer.



Tracing lines for the number 8, 6, and 3. Each number is shown as a dotted line on a set of three horizontal lines (top, middle-dashed, bottom).



Tracing lines for the number 8, 6, and 3. Each number is shown as a dotted line on a set of three horizontal lines (top, middle-dashed, bottom).



Tracing lines for the number 8, 6, and 3. Each number is shown as a dotted line on a set of three horizontal lines (top, middle-dashed, bottom).

Trace the correct answer.

